

PART OF THE N.E.1/4, OF SECTION 20, T.6N., R.3W., S.L.B. & M.

RUSSEL'S RUN

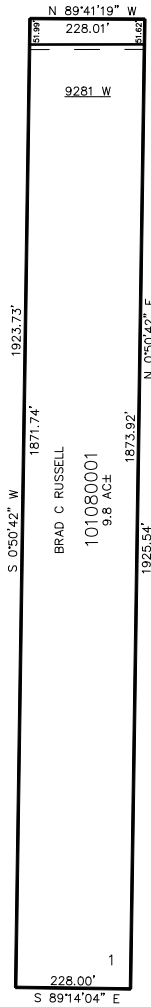
IN WEBER COUNTY

SCALE 1" = 200'

TAXING UNIT: 389

SEE PAGE 38

900 SOUTH ST



SEE PAGE 41

SEE PAGE 41

SEE PAGE 41

10' UTILITY & DRAINAGE EASEMENTS EACH SIDE OF PROPERTY LINES AS INDICATED BY DASHED LINES EXCEPT AS OTHERWISE SHOWN.

FOR COMPLETE ENG DATA SEE ORIGINAL DEDICATION PLAT IN BOOK 60, PAGE 23 OF RECORDS.